

Waste Management
Concept
2021-Future

Bijeljina



Bijeljina
Бијељина



City of the **Future**

- Republika Srpska
- Population: 115.000
- Area: 734 km² -> 142 pop./km²
- Population development: + 0,5%/year

Current Status



No separate collection of the different categories of waste



80% waste collection rate – wild landfills



All waste is dumped in landfills

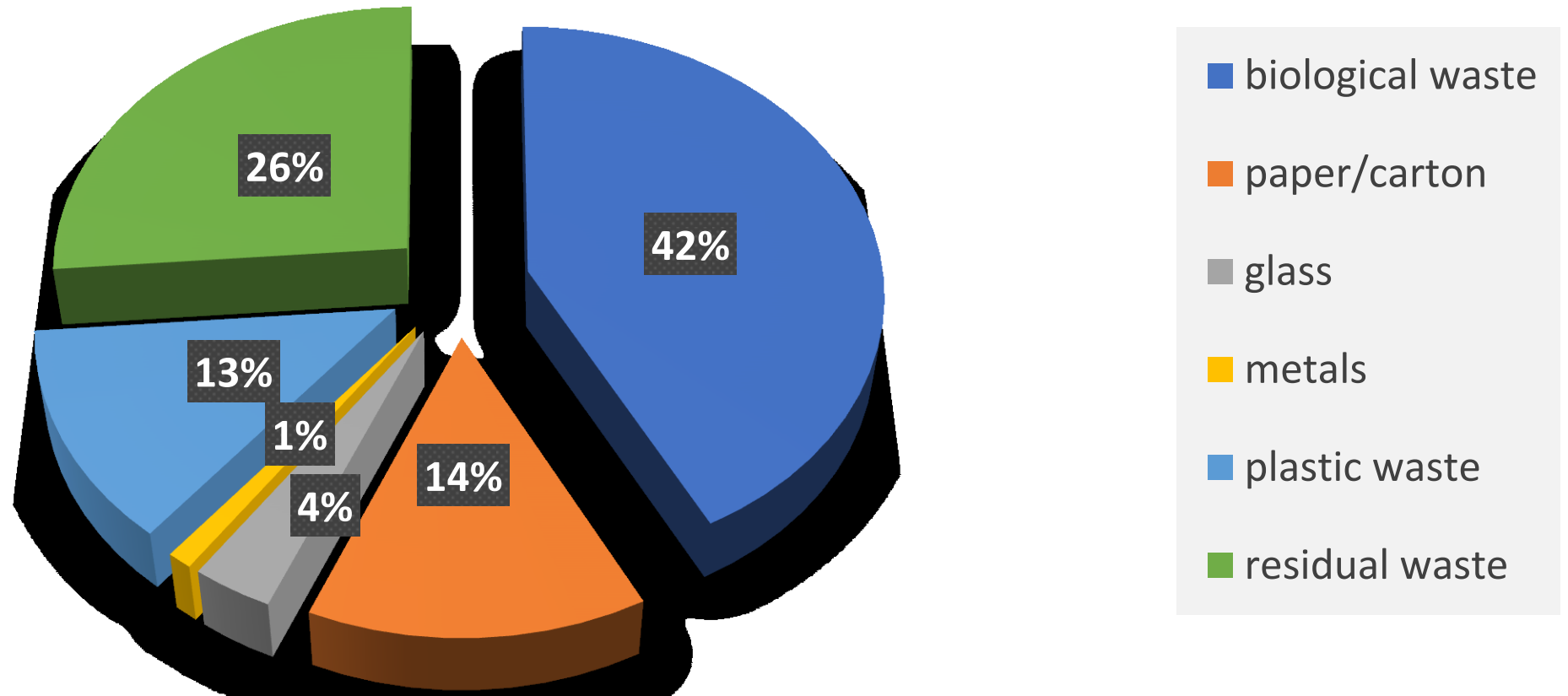


Cost of waste collection not covered

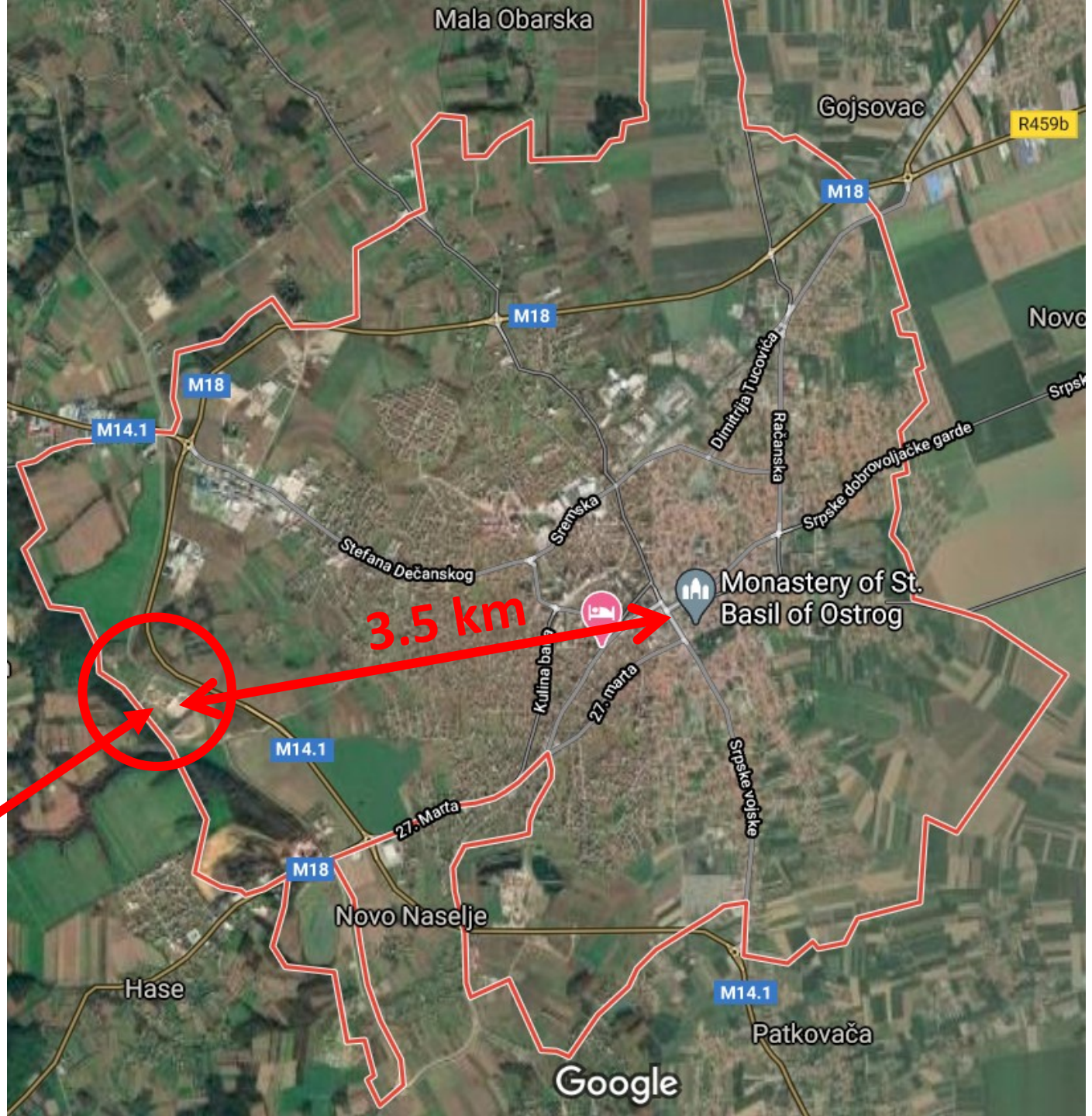


Less environmental awareness

Composition of Waste in Bijelina

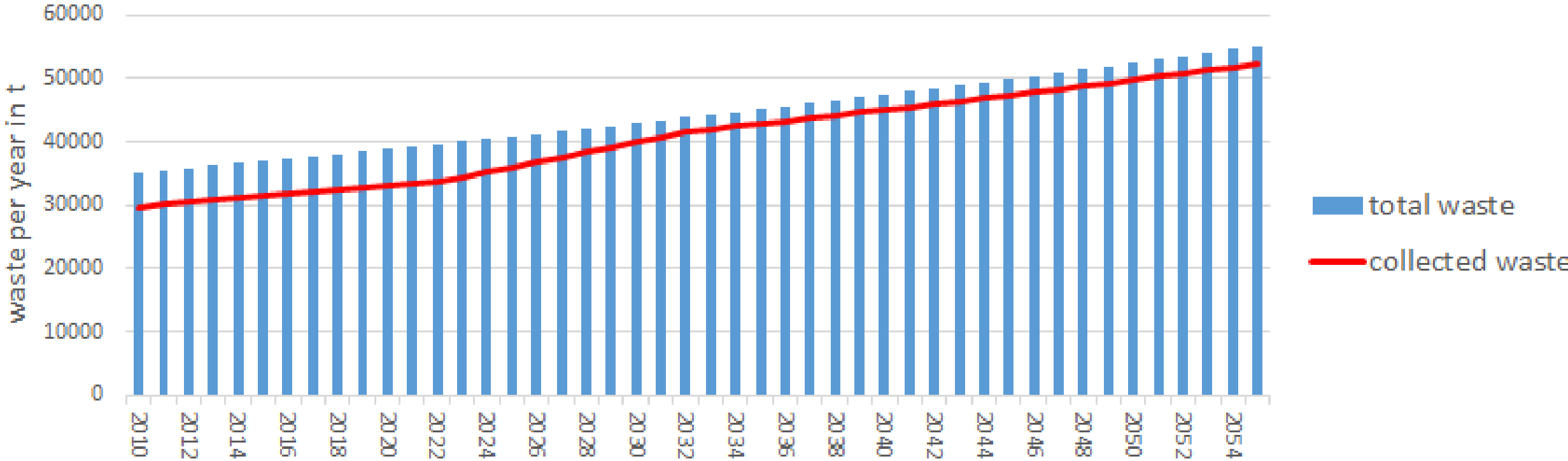


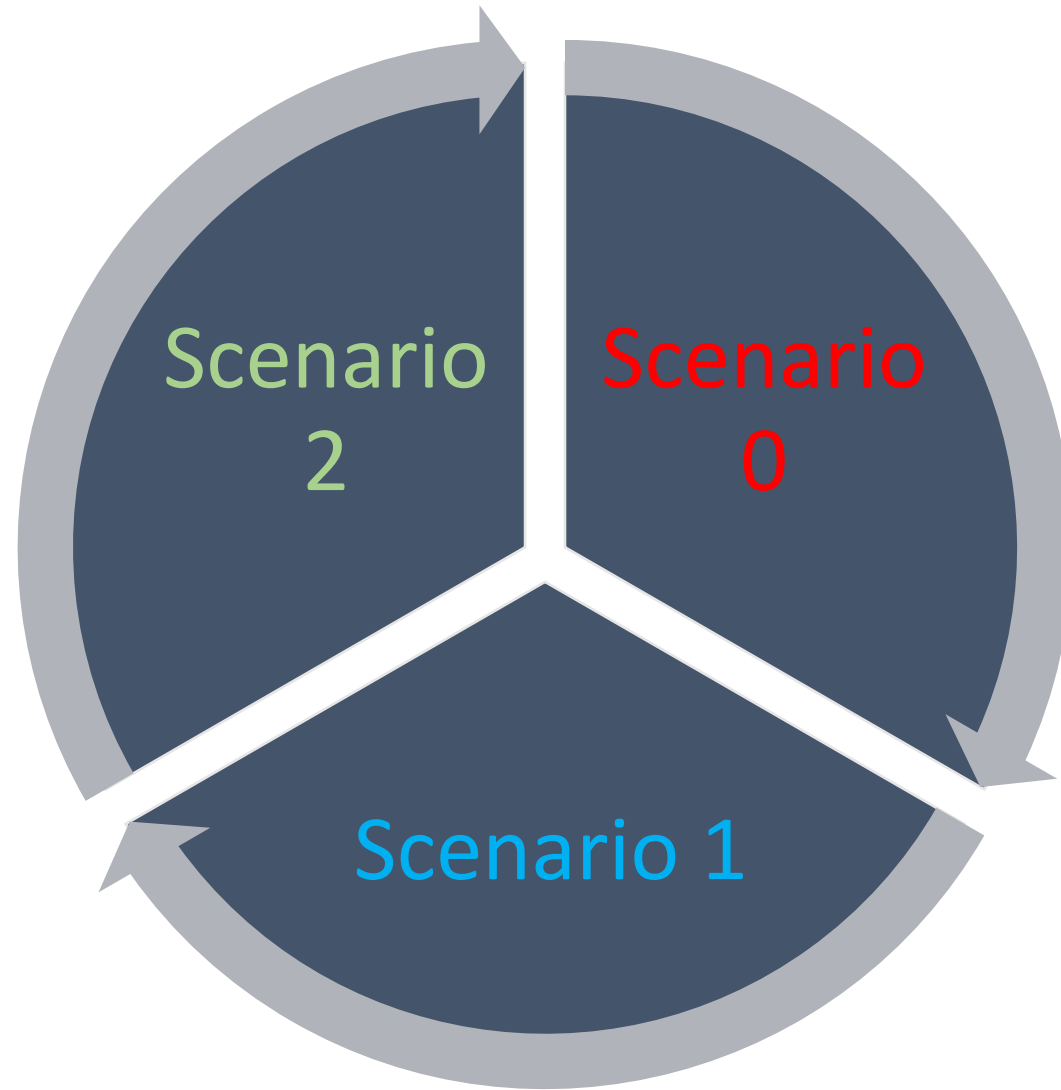
Landfill Eko-Dep



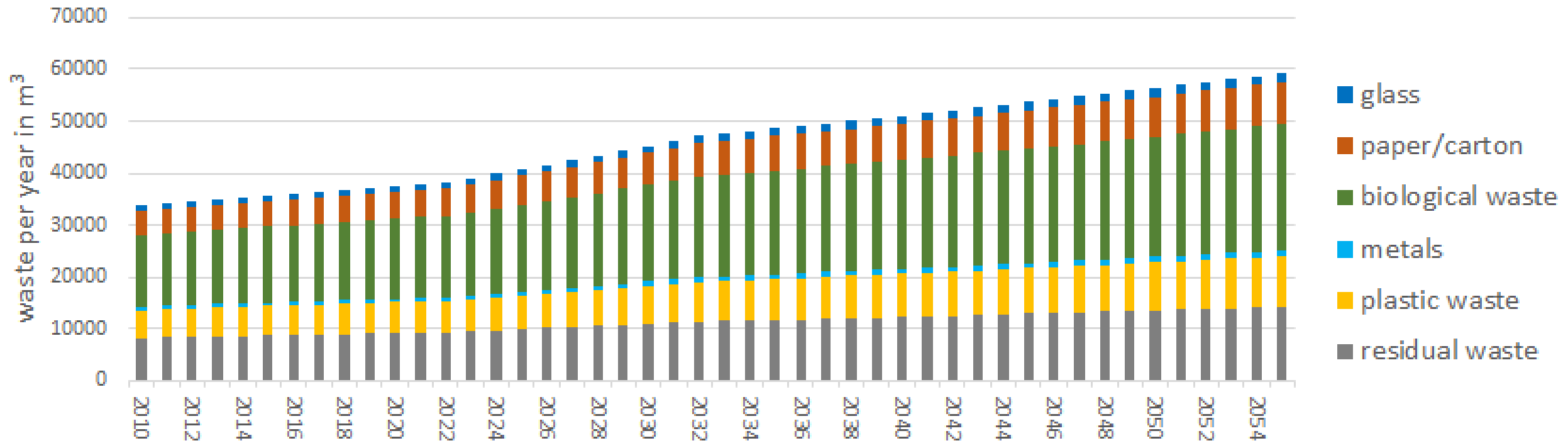


Development of the amount of waste in Bijeljina

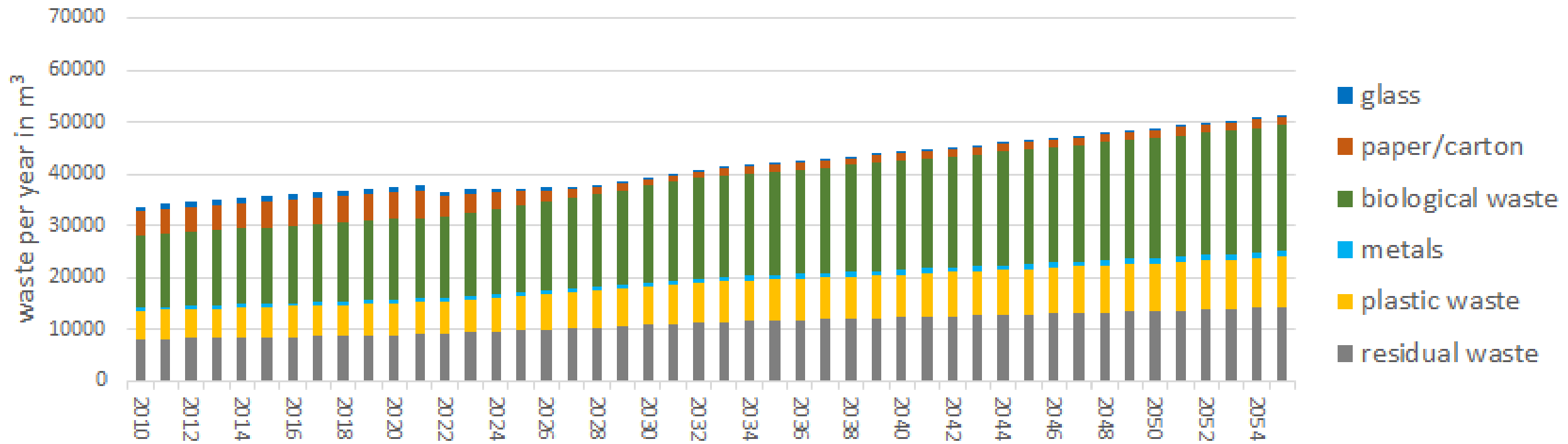




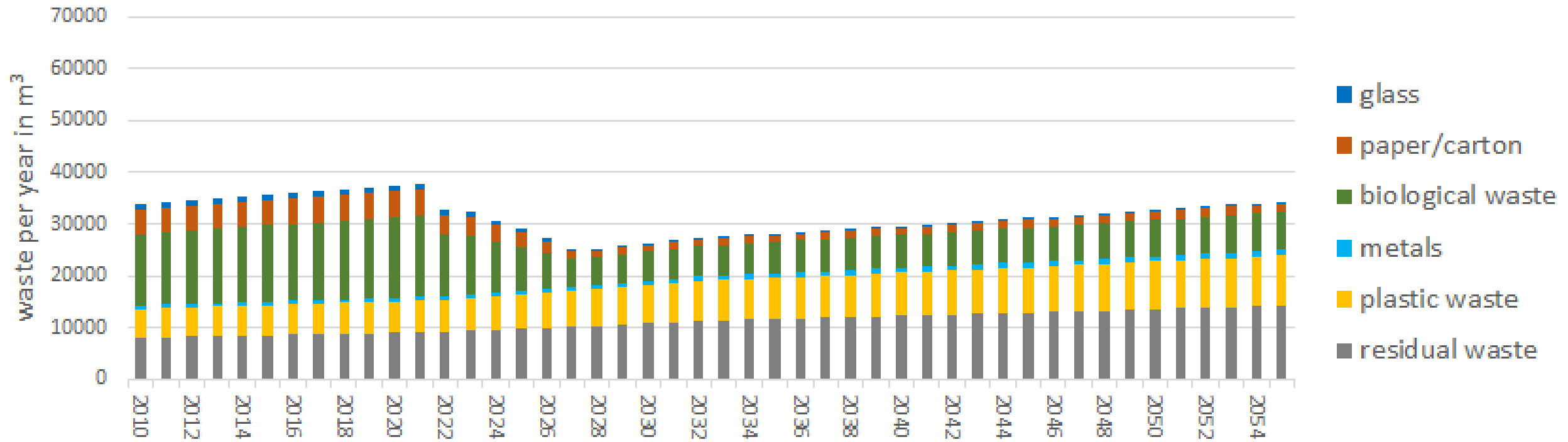
Annual waste for the landfill - scenario 0



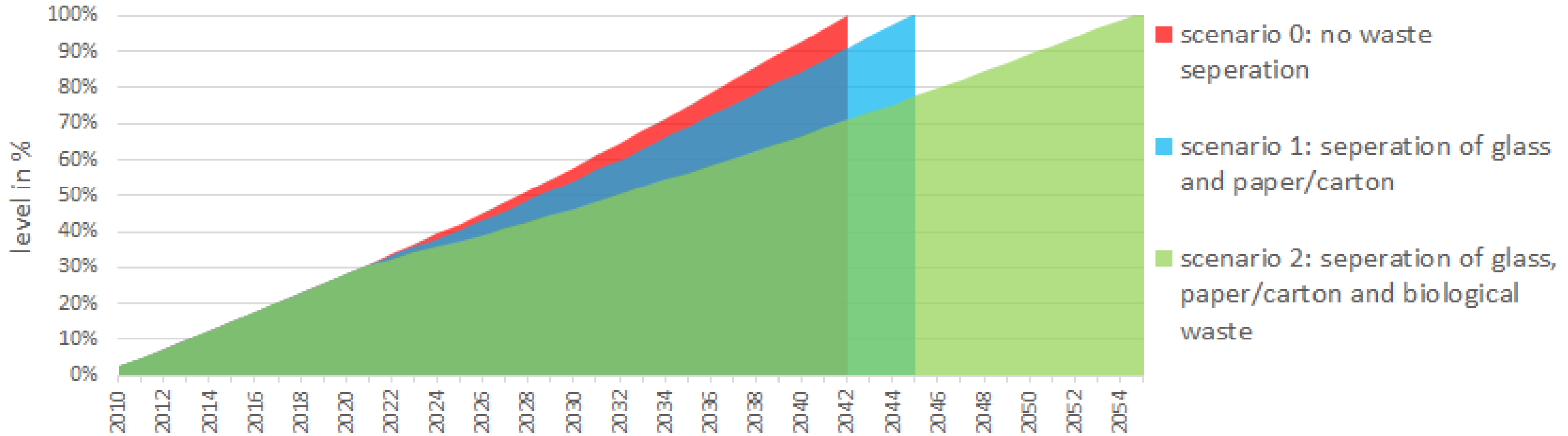
Annual waste for the landfill - scenario 1



Annual waste for the landfill - scenario 2

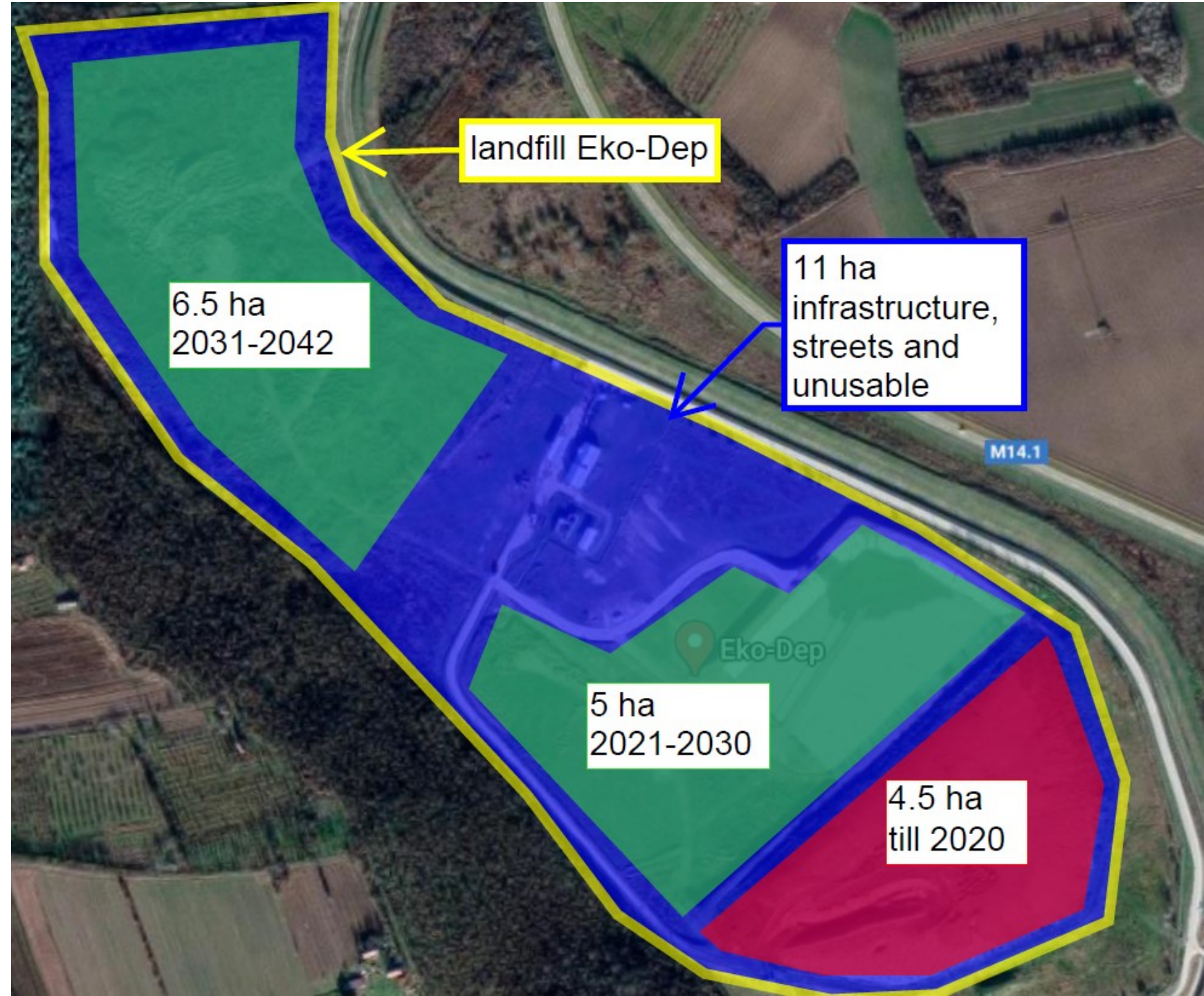


Development of the landfill



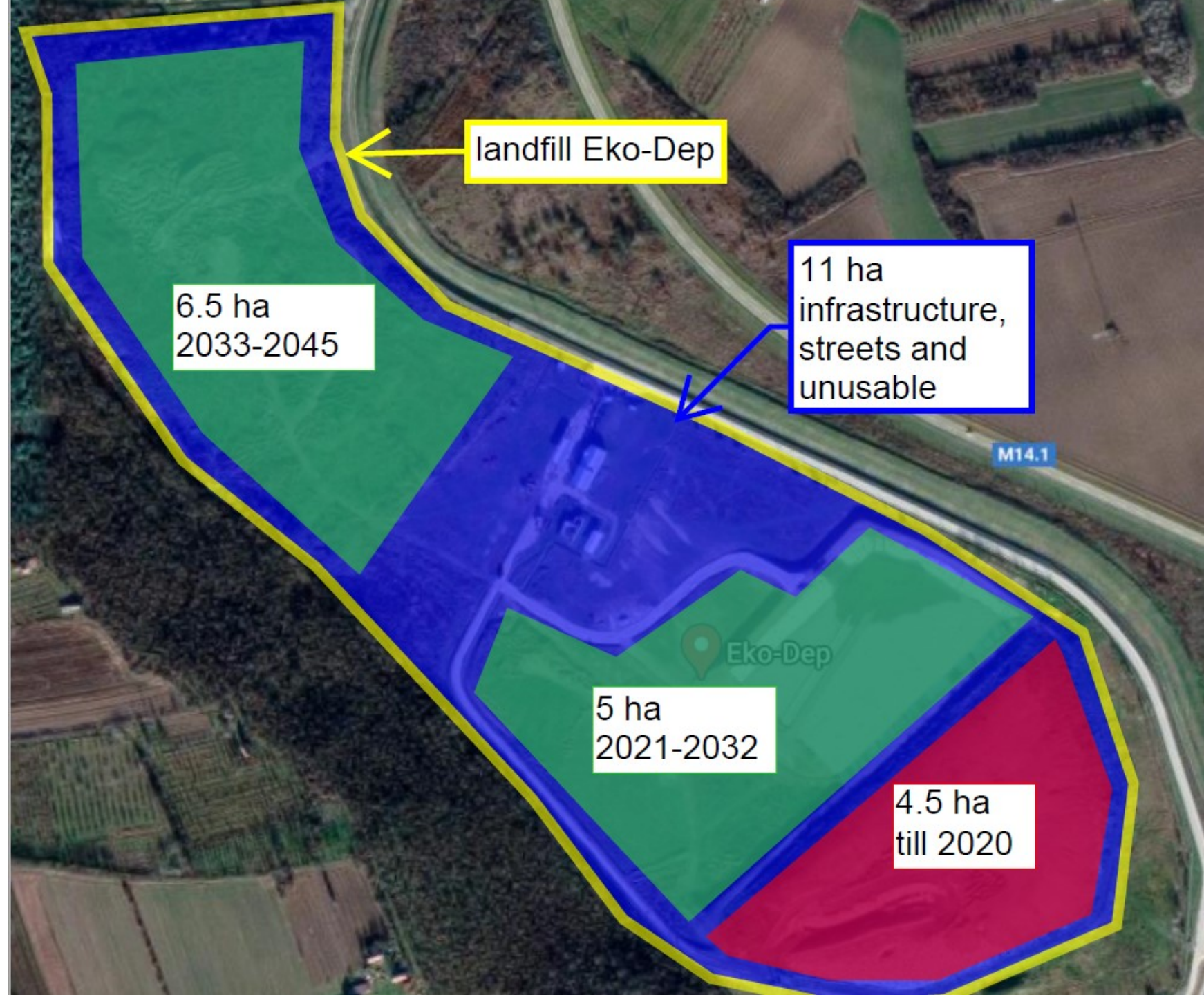
Scenario 0:

no waste separation



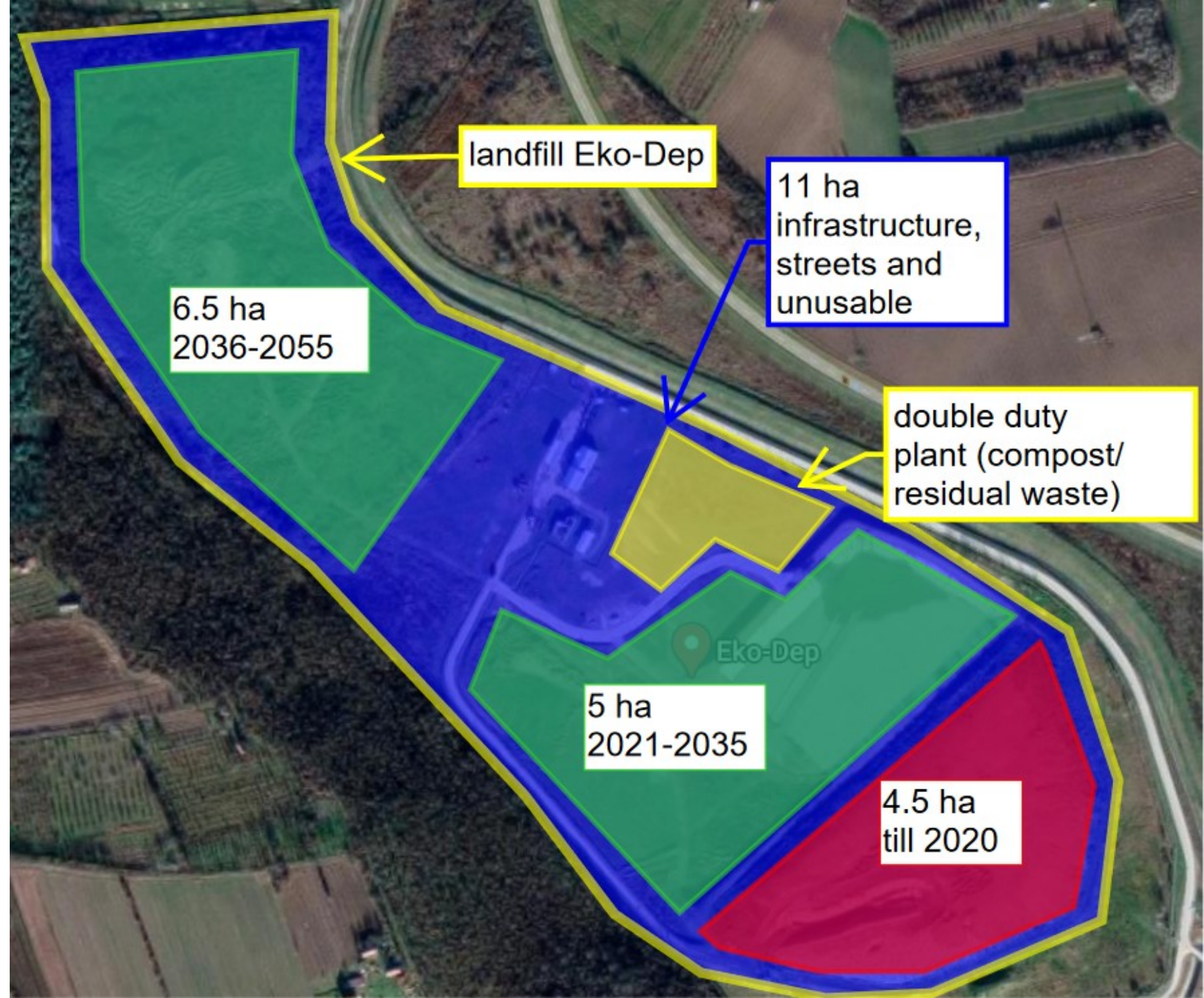
Scenario 1:

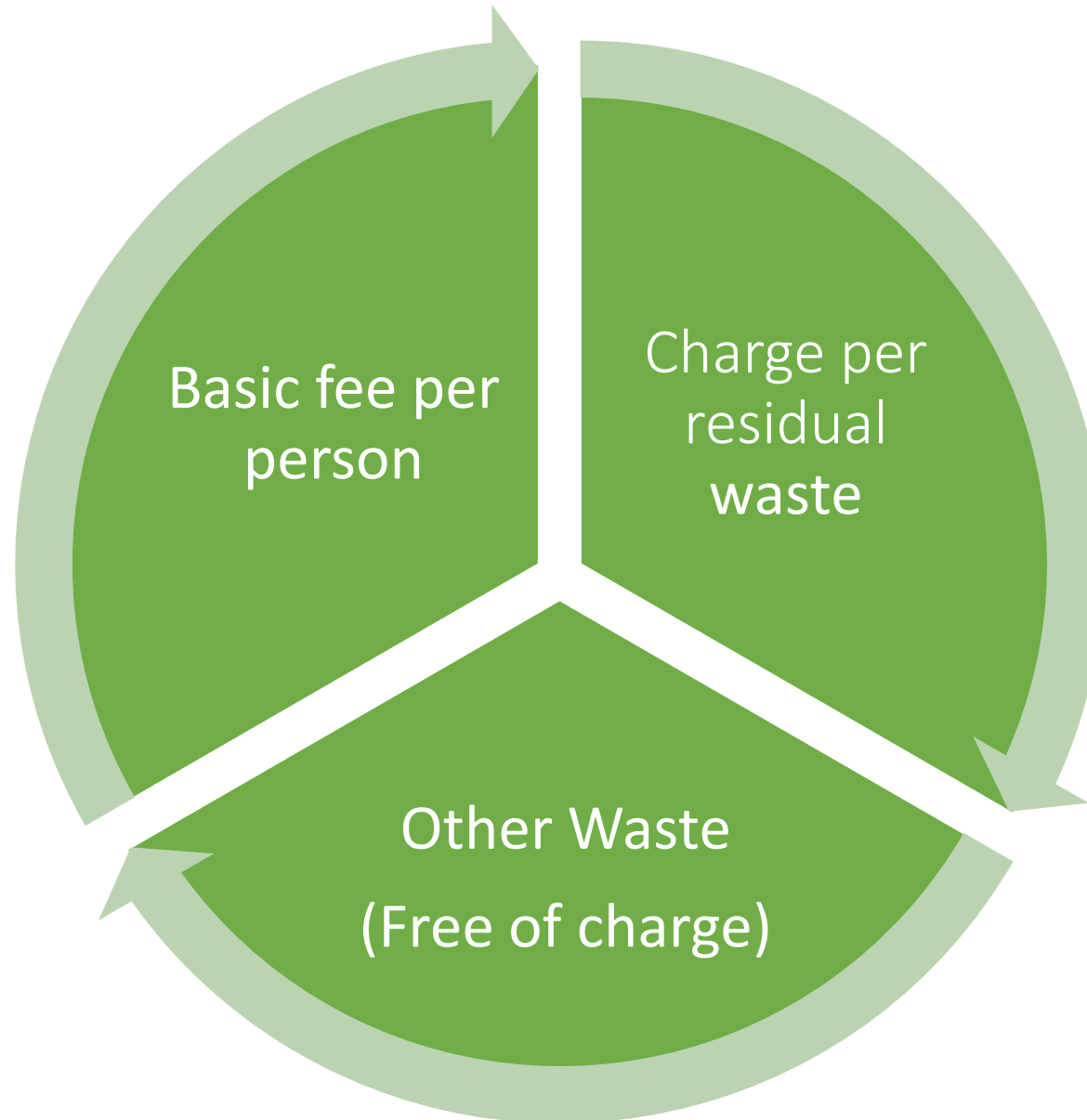
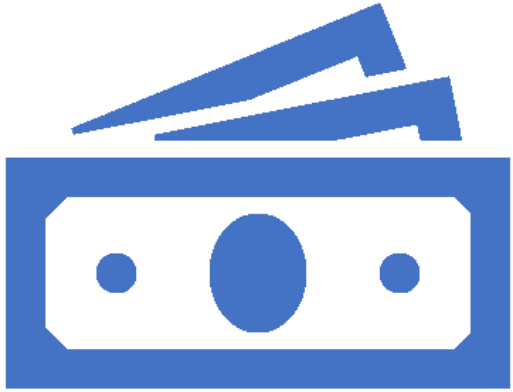
Separation of glass
and paper/carton



Scenario 2:

Separation of glass
and paper/carton
and biological waste





Environmental Awareness

- Garbage Collection Campaigns
- Integration „waste management“ in school education
- Making a promotional film





Thank you for your attention!